

# PUSH ELECTRO

Motorised rim panic device



**ISEO**<sup>®</sup>  
ULTIMATE ACCESS TECHNOLOGIES

# Push Electro



With ISEO's **Push Electro motorised panic device**, security meets freedom of movement, thanks to its reliability and **compliance with the latest regulations**. Designed to integrate perfectly with panic doors in any context, **Push Electro** retains all the features and functionality of a traditional panic device, enriching them with effective **access control** and smooth space management through **motorised opening**.

Push Electro ensures high performance without compromise, a distinctive element that has made the Push family a benchmark in the sector.



The **Push Electro** device, equipped with self-locking steel latchbolts, is available in the **fire-resistant version**.

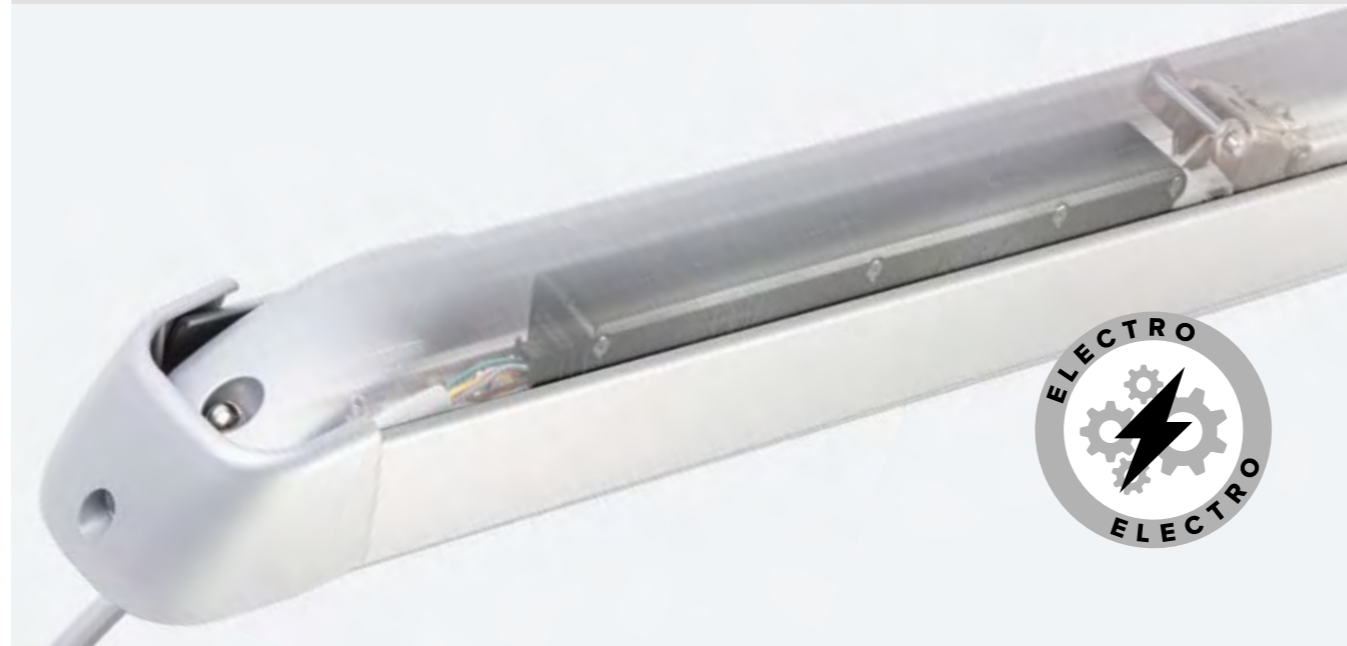
## PERMANENT ANTIBACTERIAL PROTECTION TREATMENT

In line with its focus on safety, ISEO applies AntiGerm antibacterial protection to the Push Electro device, a special treatment that constantly releases silver ions whose action, permanent over time, reduces bacteria by 99%. This feature makes the device ideal for installation in buildings where hygiene and health protection are priorities.



## INTELLIGENT MOTORISATION

Push Electro is much more than a simple panic device: it incorporates **intelligent motorisation** and strictly complies with the **EN 1125 standard**. Thanks to the integration of a state-of-the-art motor, this device offers a **motorised opening functionality** that facilitates access and ensures peace of mind and freedom of movement for all users.



## DISTINCTIVE ADVANTAGES AND FEATURES

### COMPATIBILITY WITH ISEO ACCESS CONTROL SOFTWARE

Push Electro is operated by **pressing buttons or switches**, or can be combined with **ISEO access control systems**. Through motorisation and full integration with these systems (even existing ones), it is possible to perform room control and access management, while maintaining the high product performance of the Push family.

### EFFICIENT DOOR STATUS MONITORING

Push Electro allows continuous monitoring by providing **real-time alerts on the status of the panic device** (open or closed), enabling proactive security management.



## OPERATING MODES

Push Electro offers several operating modes to suit every security need:

### REMOTE OPENING

A simple touch is enough to activate the device, which opens and remains active for the preset courtesy time. This is ideal for high-traffic environments where efficiency is crucial.

### HOLD-OPEN

In situations where it is necessary to hold the door open for an extended period of time, the hold-open function allows the device to remain open until it is returned to the closed position. It is important to note that this function should not be used on fire-resistant doors to ensure compliance with safety regulations.

## EASE OF INSTALLATION AND USE

With Push Electro, installation is quick and easy. The supplied **connecting cable**, with connector, not only ensures power supply, but also enables the **transfer of remote signals**. This ensures smooth and uninterrupted operation, simplifying the work of installers and guaranteeing an excellent user experience.

## MOTOR RETROFIT KIT

A **motor retrofit kit** is available, which can be installed on any device in the **Push rim range** (excluding Bolt versions) to make it **motorised**.





**ULTIMATE ACCESS TECHNOLOGIES  
TO UNLOCK YOUR FREEDOM TO MOVE.**





**001129.EN - 11/2024.**

Non-contractual document.

Subject to change. Images for illustrative purposes only.

**ISEO Serrature s.p.a.**  
Via San Girolamo, 13  
25055 Pisogne BS, Italy  
Tel. +39 0364 8821  
[iseo@iseo.com](mailto:iseo@iseo.com)

**iseo.com**